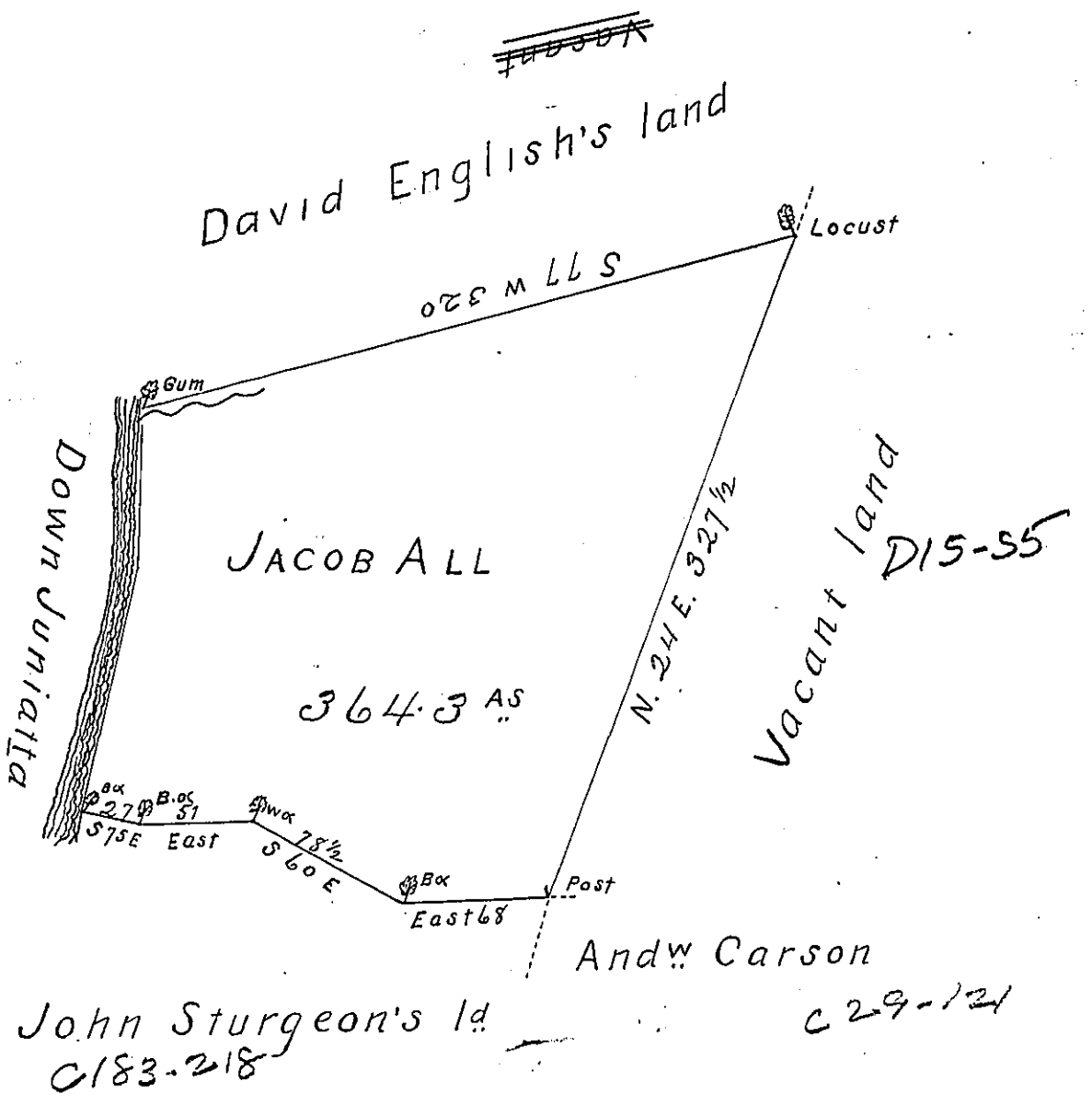


Courses & Dist^s

S 4 W 72 } Down
S 15 W 114 } Juniatta

S. 75 E. 27
East 51
S. 60 E. 78 1/2
East 68
N 24 E 327 1/2
S 77 W 320



The Draught of a tract of land situate in Greenwood township, Cumberland County, containing three hundred & sixty four acres & three tenths & the usual allowances of six per Cent. for roads &c. surveyed for Jacob All July the 3^d 1785 in pursuance of a Warrant from His Excellency the President of the Supreme Executive Council dated April the 20th 1785

John Lukens Esq. Surveyor Genl.
Jas. Harris D.S.

IN TESTIMONY that the above is a copy of the original remaining on file in the Department of Internal Affairs of Pennsylvania, made conformably to an Act of Assembly approved the 16th day of February, 1833, I have hereunto set my Hand and caused the Seal of said Department to be affixed at Harrisburg, this fourth day of August 1903

Isaac P. Brown
Secretary of Internal Affairs.